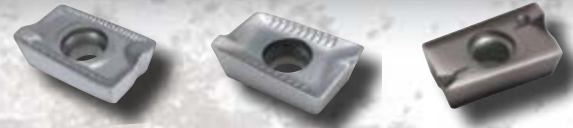


## APKT Series, Inserts and Bodies

### Inserts

Millstar Insert Number	Corner Radius	Use
APHT-1003-AL	0.031	Aluminum
APHT-1604-AL	0.031	Aluminum
APKT-1003-TLN or HSN	0.016	Steel
APKT-1003-TCT	0.016	Steel
APKT-1604-TCT	0.031	Steel
APKT-1604-TLN or HSN	0.031	Steel
APMT-1604-12-TLN	0.047	Steel
APMT-1604-16-TLN	0.063	Steel
APMT-1604-24-TLN	0.094	Steel
APMT-1604-32-TLN	0.125	Steel
APMT-1604-40-TLN	0.157	Steel
APMT-1604-48-TLN	0.189	Steel
APMT-1604-64-TLN	0.252	Steel



DSKI Bodies for 1003 Insert



DSMI Bodies for 1604 Insert

### Bodies for 1003 Insert

Millstar Part Number	Diameter	Shank Diameter	Overall Length	Effective Length	No. of Flutes	Insert size	Screw	Torx
DSKI-0375-3.0-0500	0.375	0.500	3.000	0.800	1	1003	1425	T107
DSKI-0375-6.0-0500	0.375	0.500	6.000	0.800	1	1003	1425	T107
DSKI-0500-3.25-0625	0.500	0.625	3.250	1.000	1	1003	1425	T107
DSKI-0500-6.0-0625	0.500	0.625	6.000	1.000	1	1003	1425	T107
DSKI-0625-3.25-0625	0.625	0.625	3.250	1.000	2	1003	1425	T107
DSKI-0625-6.0-0625	0.625	0.625	6.000	1.000	2	1003	1425	T107
DSKI-0750-3.5-0750	0.750	0.750	3.500	1.250	3	1003	1425	T107
DSKI-0750-8.0-0750	0.750	0.750	8.000	1.250	3	1003	1425	T107
DSKI-1000-3.5-1000	1.000	1.000	3.500	1.250	4	1003	1225	T107
DSKI-1000-8.0-1000	1.000	1.000	8.000	1.250	4	1003	1225	T107
DSKI-1250-3.75-1000	1.250	1.000	3.750	1.250	5	1003	1225	T107
DSKI-1250-10.0-1000	1.250	1.000	10.000	1.250	5	1003	1225	T107
DSKI-1500-4.0-1250	1.500	1.250	4.000	1.250	6	1003	1225	T107
DSKI-1500-10.0-1250	1.500	1.250	10.000	1.250	6	1003	1225	T107

### Bodies for 1604 Insert

Millstar Part Number	Diameter	Shank Diameter	Overall Length	Effective Length	No. of Flutes	Insert size	Screw	Torx
DSMI-0750-3.5-0750	0.750	0.750	3.500	1.250	1	1604	1440	T15
DSMI-0750-8.0-0750	0.750	0.750	8.000	1.250	1	1604	1440	T15
DSMI-1000-3.5-1000	1.000	1.000	3.500	1.250	2	1604	1440	T15
DSMI-1000-8.0-1000	1.000	1.000	8.000	1.250	2	1604	1440	T15
DSMI-1250-3.75-1000	1.250	1.000	3.750	1.250	3	1604	1240	T15
DSMI-1250-10.0-1000	1.250	1.000	10.000	1.250	3	1604	1240	T15
DSMI-1500-4.0-1250	1.500	1.250	4.000	1.250	4	1604	1240	T15
DSMI-1500-10.0-1250	1.500	1.250	10.000	1.250	4	1604	1240	T15



### Arbor Style Holders for 1003 Insert

Millstar Part Number	Diameter	Height	Keyway	Bore	No. of Flutes	Insert size	Screw	Torx
DSSA-1500/6	1.500	1.750	0.250	0.500	6	1003	1225	T07
DSSA-2000/7	2.000	1.750	0.312	0.750	7	1003	1225	T07
DSSA-2500/9	2.500	2.000	0.375	1.000	9	1003	1225	T07



### Arbor Style Holders for 1604 Insert

Millstar Part Number	Diameter	Height	Keyway	Bore	No. of Flutes	Insert size	Screw	Torx
DSMA-1500/4	1.500	1.750	0.250	0.500	4	1604	1240	T15
DSMA-2000/5	2.000	1.750	0.312	0.750	5	1604	1240	T15
DSMA-2500/6	2.500	2.000	0.375	1.000	6	1604	1240	T15
DSMA-3000/7	3.000	2.000	0.375	1.000	7	1604	1240	T15
DSMA-4000/8	4.000	2.000	0.500	1.250	8	1604	1240	T15
DSMA-5000/8	5.000	2.000	0.625	1.500	8	1604	1240	T15
DSMA-6000/9	6.000	2.000	0.625	1.500	9	1604	1240	T15

### Screw On Heads for 1003 Insert

Millstar Part Number	Diameter	Length	Thread	Pilot Diameter	No. of Flutes	Insert size	Screw	Torx
DSSC-0625/2	0.625	0.905	M8	0.335	2	1003	1425	T07
DSSC-0750/2	0.750	1.181	M10	0.413	2	1003	1425	T07
DSSC-1000/3	1.000	1.378	M12	0.492	3	1003	1425	T07

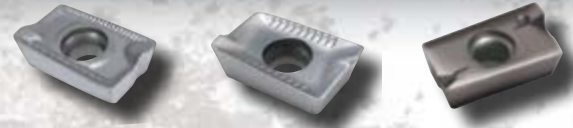
### Screw On Heads for 1604 Insert

Millstar Part Number	Diameter	Length	Thread	Pilot Diameter	No. of Flutes	Insert size	Screw	Torx
DSMC-1000/2	1.000	1.378	M12	0.492	2	1604	1440	T15
DSMC-1250/3	1.250	1.693	M16	0.669	3	1604	1240	T15

## APKT Series, Inserts and Bodies

### Inserts

Millstar Insert Number	Corner Radius	Use
APHT-1003-AL	0.8	Aluminum
APHT-1604-AL	0.8	Aluminum
APKT-1003-TLN or HSN	0.4	Steel
APKT-1003-TCT	0.4	Steel
APKT-1604-TCT	0.8	Steel
APKT-1604-TLN or HSN	0.8	Steel
APMT-1604-12-TLN	1.2	Steel
APMT-1604-16-TLN	1.6	Steel
APMT-1604-24-TLN	2.4	Steel
APMT-1604-32-TLN	3.2	Steel
APMT-1604-40-TLN	4	Steel
APMT-1604-48-TLN	4.8	Steel
APMT-1604-64-TLN	6.4	Steel



DSKI Bodies for 1003 Insert



DSMI Bodies for 1604 Insert

### Bodies for 1003 Insert

Millstar Part Number	Diameter	Shank Diameter	Overall Length	Effective Length	No. of Flutes	Insert size	Screw	Torx
DSKI-10-110-16	10	16	110	25	1	1003	1425	T07
DSKI-12-110-16	12	16	110	25	1	1003	1425	T07
DSKI-16-110-20	16	20	110	25	2	1003	1425	T07
DSKI-16-175-20	16	20	175	25	2	1003	1425	T07
DSKI-20-125-20	20	20	125	30	3	1003	1225	T07
DSKI-20-200-20	20	20	200	30	3	1003	1225	T07
DSKI-25-125-25	25	25	125	30	4	1003	1225	T07

### Bodies for 1604 Insert

Millstar Part Number	Diameter	Shank Diameter	Overall Length	Effective Length	No. of Flutes	Insert size	Screw	Torx
DSMI-20-100-20	20	20	100	30	1	1604	1440	T15
DSMI-20-200-20	20	20	200	35	1	1604	1440	T15
DSMI-25-100-25	25	25	100	30	2	1604	1440	T15
DSMI-25-200-25	25	25	200	35	2	1604	1440	T15
DSMI-32-110-32	32	32	110	35	3	1604	1240	T15
DSMI-32-250-32	32	32	250	35	3	1604	1240	T15
DSMI-40-110-32	40	32	110	35	4	1604	1240	T15
DSMI-40-250-32	40	32	250	35	4	1604	1240	T15



### Arbor Style Holders for 1003 Insert

Millstar Part Number	Diameter	Height	Keyway	Bore	No. of Flutes	Insert size	Screw	Torx
DSSA-32/5	32	40	8,4	16	5	1003	1225	T07
DSSA-40/6	40	40	8,4	16	6	1003	1225	T07
DSSA-50/7	50	40	10,4	22	7	1003	1225	T07
DSSA-63/9	63	50	10,4	22	9	1003	1225	T07



### Arbor Style Holders for 1604 Insert

Millstar Part Number	Diameter	Height	Keyway	Bore	No. of Flutes	Insert size	Screw	Torx
DSMA-40/4	40	40	8,4	16	4	1604	1240	T15
DSMA-50/5	50	40	10,4	22	5	1604	1240	T15
DSMA-63/6	63	50	10,4	27	6	1604	1240	T15
DSMA-80/7	80	50	12,4	27	7	1604	1240	T15
DSMA-100/8	100	50	14,4	32	8	1604	1240	T15
DSMA-125/8	120	63	16,4	40	8	1604	1240	T15
DSMA-160/9	160	63	16,4	40	9	1604	1240	T15

### Screw On Heads for 1003 Insert

Millstar Part Number	Diameter	Length	Thread	Pilot Diameter	No. of Flutes	Insert size	Screw	Torx
DSSC-16/2	16	23	M8	8,5	2	1003	1425	T07
DSSC-20/3	20	30	M10	10,5	3	1003	1225	T07
DSSC-25/3	25	35	M12	12,5	3	1003	1425	T07

### Screw On Heads for 1604 Insert

Millstar Part Number	Diameter	Length	Thread	Pilot Diameter	No. of Flutes	Insert size	Screw	Torx
DSMC-25/2	25	35	M12	12,5	2	1604	1440	T15
DSMC-32/3	32	43	M12	17	3	1604	1240	T15